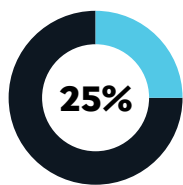


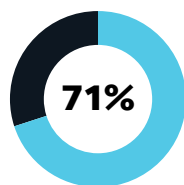
Powerful Phishing Protection for M365

Powerful Protection & Remediation for M365

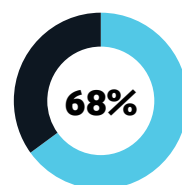
Next-generation phishing protection and remediation solution. Our proprietary machine-learning algorithm integrates directly with Microsoft 365, catching and remediating sophisticated phishing attacks Microsoft misses. These sophisticated, zero-day attacks are currently being missed and are where the real damage occurs.



25% of phishing emails are marked clean by Office 365 EOP.



71.4% of Microsoft 365 business users suffer at least one compromised account each month.



Windows Defender blocked phishing sites only 68% of the time.

Key Features



Time of Click Protection



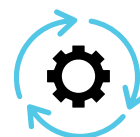
URL rewriting



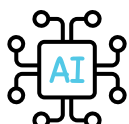
Native M365 Integration



Post Delivery Remediation



Auto Remediation



AI & LLM Driven Analysis



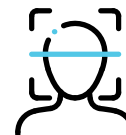
Banner Notifications



Stops Business Email Compromise (BEC)



7 minute Setup



Display Name Anti-Spoof

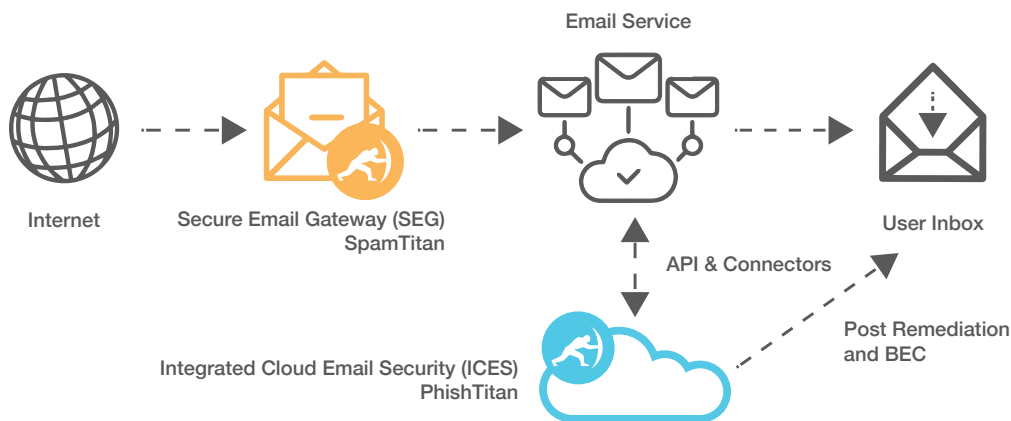
Why is this Solution the Best Choice for Protecting M365?

It provides next-generation phishing protection and remediation. Our proprietary machine-learning algorithm integrates directly with Microsoft 365, catching and remediating sophisticated phishing attacks Microsoft misses.

What do you get when you add a Phishing Protection Layer to your Office 365?

With over 345 million paying users, Microsoft 365 is one of the most popular application suites for businesses and has become a popular target for cybercriminals. This solution enhances your security stance by offering an additional layer of security that complements EOP and Defender. Connecting through M365 APIs, offering effortless onboarding, simple management, additional protective analysis, and the capability for post-delivery remediation across multiple tenants.

How it Works - Secure Email Gateway v Integrated Cloud Email Security



PhishTitan works inline within M365 and scans all internal and external emails. You have full 360 coverage. The email security market is moving at pace toward inline phishing solutions:

in 2025, Gartner predict 25% of all email security will be inline/integrated (growing from 5% in 2022).

Unparalleled Threat Intelligence & High Detection Accuracy

Best-in-class phishing protection for M365 by offering an additional layer of security that complements EOP and Defender. This solution offers the highest detection accuracy possible. This puts a stop to phishing attacks by analyzing and identifying threats using:

- » LLM intelligence and user feedback.
- » Curated threat intelligence data unmatched in visibility, coverage, and accuracy.
- » URL analysis through numerous curated feeds to detect malicious destinations linked to phishing emails.
- » Machine learning (ML) detection models that are very effective at adapting to new phishing tactics.
- » Allow list – easily upload a list of trusted domains.
- » Connecting through M365 APIs, you can be up and running in less than 7 minutes.
- » Auto Remediation – Admins can choose to divert a malicious mail email directly to junk folder, providing an additional layer of risk mitigation and enhanced protection.
- » Exploited domains - admins have the option to apply a banner to emails from free email services and alert users to be vigilant.
- » Display Name Anti-Spoof – identifying spoofing attempts with a warning banner.
- » Threat Coach – using AI to identify the parts of a phishing mail that are indicative of malicious content.

User Experience & Reporting

Seamlessly integrates into M365 and:

- » Offers an additional layer of security that augments Exchange Online Protection (EOP) and Microsoft Defender.
- » Detailed reports and real-time alerts.
- » Provides automatic warning of suspect emails.
- » Feedback using Outlook add-in.

Training & Support

On top of the technical capabilities, we offer:

- » Comprehensive customer support ensuring seamless implementation.
- » Webinars and courses to help you efficiently enable all features and educate your users about phishing threats.